



ACT/SAT Test-Prep Equity and Access for All

Highly Personalized Test-Prep Powered by Machine Learning

Beable is the next-generation online Literacy Recovery Platform™ for grades 2–12. By cultivating the whole child, Beable creates adaptive pathways for each learner that encompass personal growth, career exploration, and academic rigor. Beable also sets a new standard for ACT/SAT test-prep effectiveness with *Beable Prep*. By providing all the students in a district with the highest-quality test-prep, *Beable Prep* **advances equity and access**. By combining cutting-edge technology and the award-winning PAL methodology, it helps every student get the best test score...pass high school exit exams...get accepted to college...and gain ground economically.



- *Beable Prep* empowers students to recognize their unique strengths to **solve problems quickly and correctly**—and to develop the ability to rapidly switch among their strengths.
- It provides a **personalized and adaptive** path to success for *all* students based on each student’s ability and timeline.
- By doing so, it helps learners develop **Cognitive Flexibility**—the higher-order thinking skill they need to succeed on the ACT and SAT...and throughout their lives.

Delivered online in school and at home
For teacher-led and independent learning
Covers Math, English, Reading, and Science as appropriate for each test
Instruction and feedback in English and Spanish



Cognitive Flexibility:

Beable Prep teaches students to look at a problem and quickly determine the optimal strategy that applies their strengths to solve it. Students learn to switch among strategies, so they are always solving problems from a position of strength. This is Cognitive Flexibility—the awareness of one’s own strengths and the ability to adapt as needed and excel in the process.

Cultivating Students' Ability to Recognize Strengths and Improve Skills

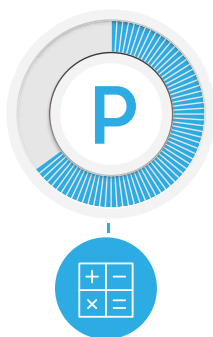
Developed in partnership with examPAL, the world's most-awarded test-prep provider, *Beable Prep* is the only test-prep solution that empowers learners to recognize their unique problem-solving strengths. Through its [proprietary methodology and technology](#), *Beable Prep* ensures that students:

- Understand their existing strengths and improve areas of lesser strength.
- Develop flexibility to choose among strengths to solve problems in the most effective way.



The Proprietary PAL Methodology: A Revolutionary Test-Prep Approach

Instead of learning dozens of different test-taking strategies, *Beable Prep* focuses students on the three main strategies that work for all question types: [Precise](#), [Alternative](#), and [Logical](#). Through PAL, students identify the best strategies for them...for any given question and subject area. In this way, *Beable Prep* [simplifies and speeds up the test-taking process](#)—the keys to better scores.

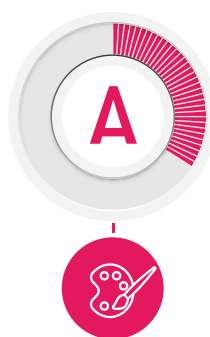


Precise

Students directly solve the problem.

Often the only strategy taught in school.

Accurate but time-consuming.



Alternative

Students arrive at the right answer without necessarily knowing the underlying reasoning.

Use trial and error, approximation, elimination of incorrect answers, etc.



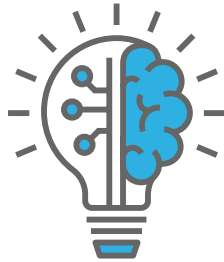
Logical

Students apply understanding of how a problem works to arrive at the right answer without solving it.

Apply rules and patterns to make logical deductions.

Personalization Powered by Cutting-Edge Technology

Through its advanced technology, *Beable Prep* provides the **most personalized test-prep program** in K-12.



Machine Learning

(a form of Artificial Intelligence)

Beable Prep actively learns each student's thought process and problem-solving strengths and weaknesses.

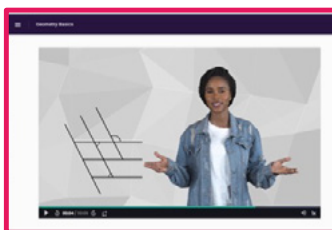


Wisdom of the Crowd

The system aggregates everything it knows about all students, identifying and presenting the overall most-effective strategy for each question type.

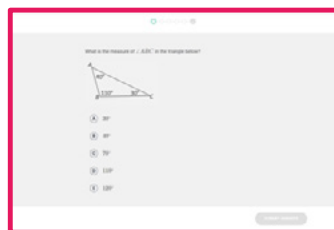
Four-Part Routine for Continual Improvement

Beable Prep is a comprehensive, adaptive test-prep program that goes far beyond rote practice. It develops test-taking strategies. It provides personalized practice and feedback. It develops Cognitive Flexibility. Most of all, it teaches the **fastest route for each student to the right answers**.



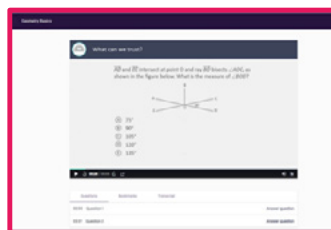
Intro

Interactive videos refresh understanding of foundational skills.



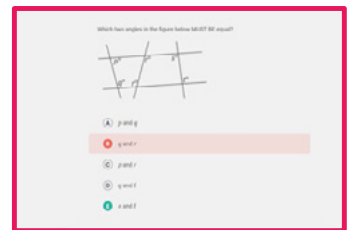
Reinforcement

Reinforcement activities strengthen skills.



Lessons

Interactive videos teach the different test-taking strategies and how to apply them.



Practice

Three-part practice uses ACT- and SAT-formatted items to mimic real test content.

Test-Prep That's 'Lifelong Success' Prep

Beable Prep goes far beyond other test-prep solutions. By addressing the whole child—from helping them develop self-awareness of their interests and strengths to personalizing career exploration to accelerating essential literacy skills—Beable Prep puts kids on the path to gainful employment and lifelong success.

Beable Prep includes:

- **Comprehensive Learner Record:** Learner Records that are updated on an ongoing basis, including personal and career interests and strengths, academic gaps and goals, and college/workplace aspirations.
- **Career development:** Personalized career exploration based on interests, values, and goals, plus differentiated readings on the six themes from the RIASEC career interest inventory, World of Work® careers, and essential skills.
- **Literacy recovery:** Age-appropriate, high-interest articles differentiated to students' individual reading levels to drive literacy growth.

The screenshot shows a user interface for a 'Comprehensive Learner Record' for a student named Shanise Johnson. At the top, it displays the student's name, grade (8th Grade), class year (Class of 2024), and location (Stardew Heights). Below this, there are statistics for Points (20,510), Lessons (41), and Reading Interests (5), along with a 'Show My History' button. The main section is titled 'Career Development' and contains several cards: 'Wants to attend Brookfield College after graduation', 'College majors of interest: Pre-med, Biology', 'Volunteers at Ridgewood Animal Shelter', 'ACT: Taking ACT 2023', 'Current jobs: Babysitter', and 'Workplace values: Likes to work with other people'. Below these are 'Career Interests' for Heart Surgeon, Dental Hygienist, and Physiotherapist, each with a 'Best Fit' label. To the right is a 'RIASEC Code: RIC' section with a bar chart and a list of interest types: Realistic, Investigative, Artistic, Social, Enterprising, and Conventional, each with a corresponding bar.

ACT/SAT equity, access and success
start with Beable Prep.

Email info@Beable.com or call 1.833.866.8066
to request a demo or for more information.

Visit us at [Beable.com](https://www.Beable.com)



Elementary | Middle School | High School
General Ed | ELL | Special Ed